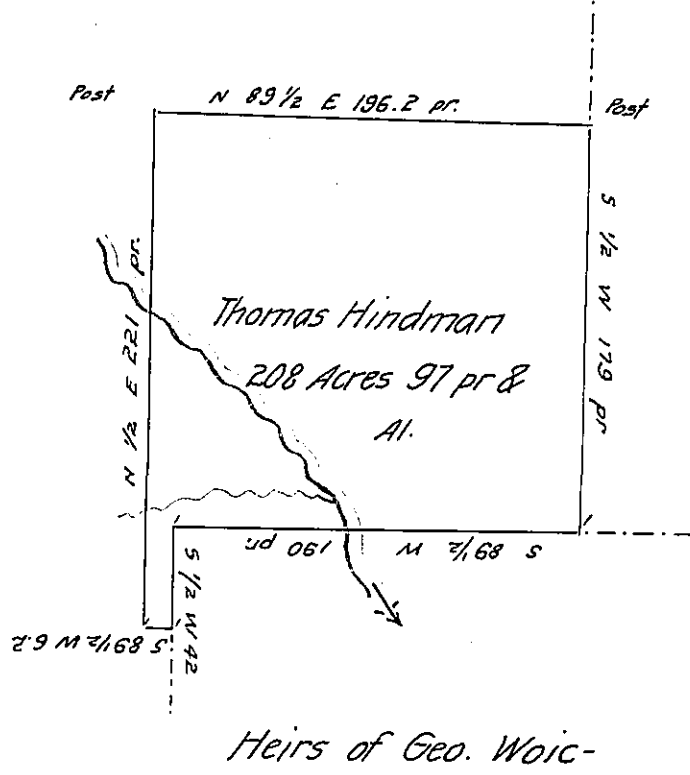


Heirs of George Woice



James Vinson

Heirs of Geo. Woic-

Draft of a part of a tract of land situate in Mercer town-  
 ship Butler County on the waters of Slipprerock Creek Containing two  
 hundred eight acres ninety seven perches & All. Surveyed April 12<sup>th</sup> 1836  
 at the instance of John McNeas who has since sold to the present occupent  
 Thomas Hindman. Survey made by James J. Hoge D.S. for Butler County  
 at the date above mentione-

T. H. Lyon. D.S.

John Taylor Esq.  
 Surveyor General.

Dec. 12<sup>th</sup> 1837

IN TESTIMONY that the above is a copy of the original remaining on file in  
 the Department of Internal Affairs of Pennsylvania, made  
 conformably to an Act of Assembly approved the 16th day of  
 February, 1833, I have hereunto set my Hand and caused  
 the Seal of said Department to be affixed at Harrisburg,  
 this ninth day of May 1905

*Soac D. Swain*  
 Secretary of Internal Affairs.